



Rabbit Skins™ Infant Short Sleeve Baby Rib Bodysuit. RS4400



These bodysuits feature lap shoulders to make it easier for the many times a day that parents have to change baby's outfit.

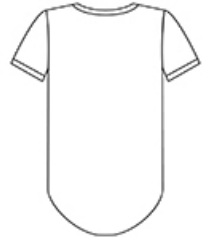
- 5-ounce, 100% combed ring spun cotton 1x1 baby rib
- 88/12 combed ring spun cotton/poly (Heather)
- White is sewn with 100% cotton thread for easy garment dyeing
- Side seamed
- EasyTear™ label for additional comfort and ability to brand as your own
- Flatlock seams
- Double-needle ribbed binding on neck, shoulders, sleeves and leg openings
- Innovative three-snap closure

CARE INSTRUCTIONS

Machine wash cold. Only non-chlorine bleach. Tumble dry low. Do not iron on decoration. Do not dry clean. Not intended for sleepwear.



front






back

SIZE CHART

	NB	06M	12M	18M	24M
Chest Width	7 1/4	8 3/4	9 3/4	10 3/4	11 3/4
Body Length at Back	11 1/2	12 1/2	13 1/2	14 1/2	15 1/2
Sleeve Length	2 1/2	2 3/4	3	3 1/4	3 1/2

COLOR INFORMATION

 Banana PMS 1205C	 Black PMS BLACK 6C	 Charcoal PMS 445C	 Granite Heather PMS 425C	 Heather PMS COOL GRAY 5C	 Hot Pink PMS 1915C	 Kelly PMS 3288C	 Key Lime PMS 366C	 Light Blue PMS 543C	 Navy PMS 655C	 Orange PMS 172C
 Pink PMS 1895C	 Purple PMS 269C	 Red PMS 185C	 Royal PMS 287C	 Turquoise PMS 639C	White	 Yellow PMS 116C				