



# Mercer+Mettle™ Women's Open-Front Cardigan Sweater MM3023



Soft, comfortable, and as a transitional layer for day or night, this easy care sweater is a refined knit that won't bag out with wear. Sophisticated details like square patch pockets and a wide, rib bottom hem lend a modern sensibility to accent your unique sense of style.

**Fabric+Weight**

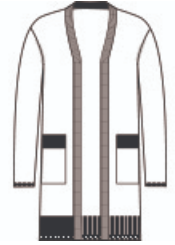
- 90/9/1 cotton/nylon/spandex

**Features+Benefits**

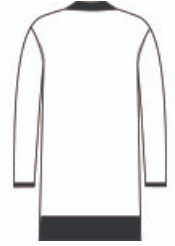
- Fully-fashioned armholes
- Square patch pockets
- Wide, rib bottom hem

**CARE INSTRUCTIONS**

Machine Wash Cold With Like Colors. Only Non-Chlorine Bleach When Needed. Tumble Dry Low. Cool Iron If Necessary.

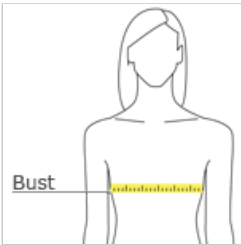


front



back

**HOW TO MEASURE**



**BUST**  
Measure under the arm and around the fullest part of the bust with arms down, keeping tape horizontal.

**SIZE CHART**

	XS	S	M	L	XL	2XL	3XL	4XL
Size	2	4/6	8/10	12/14	16/18	20/22	24/26	28/30
Bust	32-34	35-36	37-38	39-41	42-44	45-47	48-51	52-55

**COLOR INFORMATION**



Birch  
PMS 7534C



Deep Black  
PMS BLACK C



Gusty Grey Heather  
PMS COOL GRAY  
8C